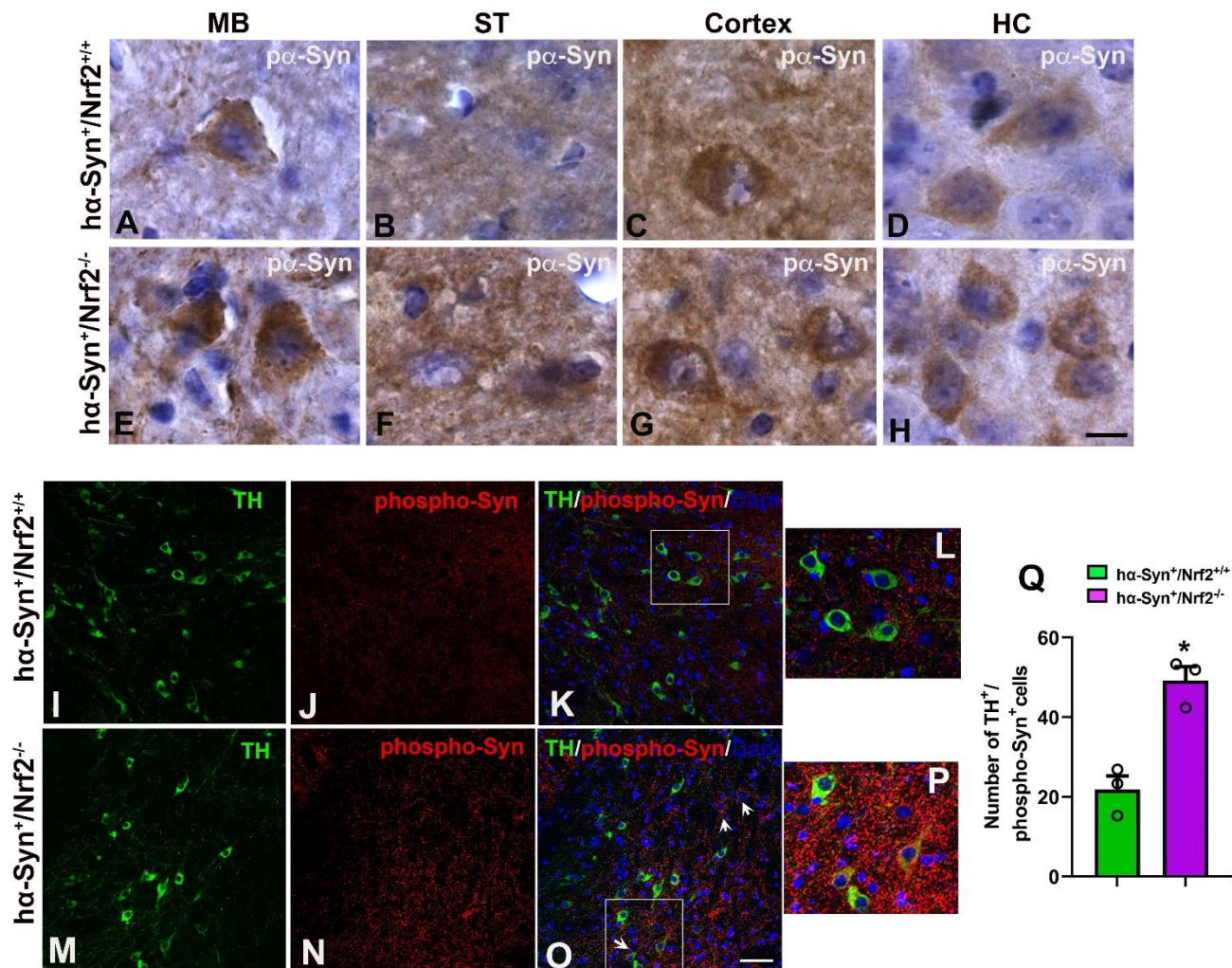


NRF2 Loss Accentuates Parkinsonian Pathology and Behavioral Dysfunction in Human α -synuclein Overexpressing Mice

Annadurai Anandhan^{1,2}, Nhat Nguyen³, Arjun Syal⁴, Luke A Dreher⁵, Matthew Dodson¹, Donna D Zhang^{1*}, Lalitha Madhavan^{2,6*}

SUPPLEMENTARY DATA



Supplementary Figure 1. Characterization of phospho- α -Syn immunoreactivity in relation to SN TH neurons of NRF2/ α -Syn mice. High magnification images showing subcellular localization of phospho- α -Syn in the MB (A, E), ST (B, F), Cortex (C, G), and HC (D, H) of *ha-Syn⁺/Nrf2^{+/+}* and *ha-Syn⁺/Nrf2^{-/-}* mice. Representative images of phospho- α -Syn immunofluorescence staining in relation to TH neurons in the SN of *ha-Syn⁺/Nrf2^{+/+}* (I-L) and *ha-Syn⁺/Nrf2^{-/-}* mice (M-P). L and P are high magnification views of areas in K and O. Arrows in O point to cells with high phospho- α -Syn but low TH immunoreactivity. (I) shows the quantification of TH⁺/phospho-Syn⁺ cells in the SN ($n=3$). [* $p<0.05$, Unpaired t-test]. Scale bar = 10 μ m for A-H is in H; Scale bar = 25 μ m for I-K & M-O is in G.

SUPPLEMENTARY DATA

Supplementary Table 1. Statistical details of pairwise comparisons via two-way RM ANOVA in the Nest building behavioral task.

<i>ha-Syn⁺/Nrf2^{+/+} vs ha-Syn⁺/Nrf2^{-/-}</i>						
	<i>Nestlet pulldown</i>			<i>Nestlet used</i>		
	t value	p value	Significant?	t value	p value	Significant?
12 hrs	0.73	1.0	No	0.016	1.0	No
24 hrs	1.06	1.0	No	0.218	1.0	No
36 hrs	2.72	0.048	Yes	0.37	1.0	No
48 hrs	2.84	0.034	Yes	3.7	0.002	Yes
60 hrs	2.94	0.026	Yes	2.69	0.04	Yes
72 hrs	2.82	0.036	Yes	2.72	0.044	Yes