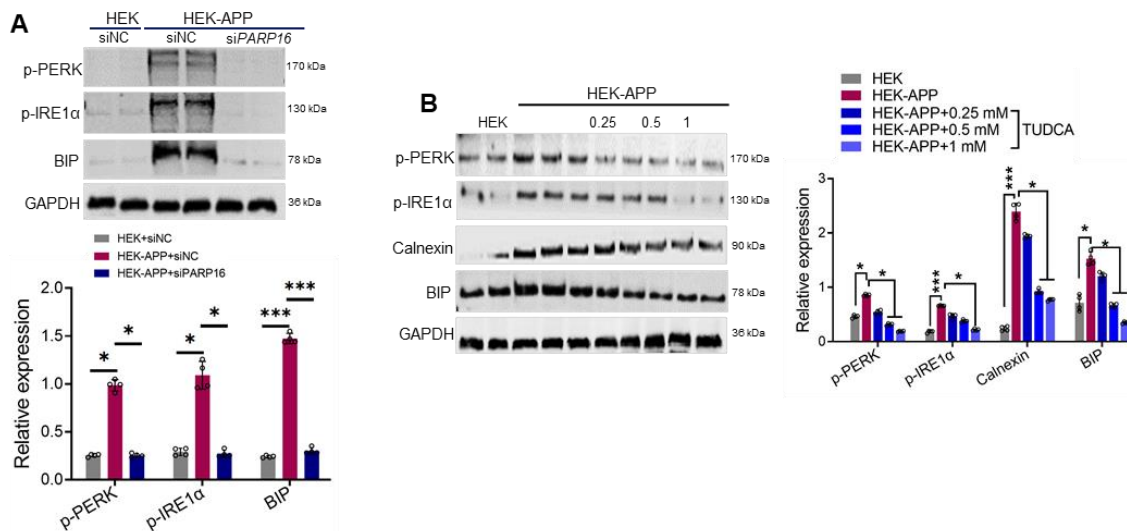


SUPPLEMENTARY DATA

**PARP16-Mediated Stabilization of Amyloid Precursor
Protein mRNA Exacerbates Alzheimer's Disease
Pathogenesis**

**Jinghuan Wang, Qianwen Cheng, Yuyu Zhang, Chen Hong, Jiayao Liu, Xinhua Liu^{*}, Jun
Chang^{*}**

SUPPLEMENTARY DATA



Supplementary Figure 1. TUDCA attenuated ER stress in HEK-APP Cells. (A) Knockdown PARP16 attenuated ER stress through mediating PERK and IRE1 α signal pathway in HEK-APP Cells. HEK and HEK-APP cells were transfected with negative control (siNC) mimics or *siParp16*, and p-PERK and p-IRE1 α signaling were measured by Western blotting. (B) TUDCA attenuated ER stress in HEK/APPsw Cells. HEK and HEK-APP cells were treated with indicated concentrations TUDCA, and p-PERK and p-IRE1 α signaling were measured by Western blotting. Data represent the mean \pm SD, * p < 0.05, *** p < 0.001, at least three experiments were repeated.