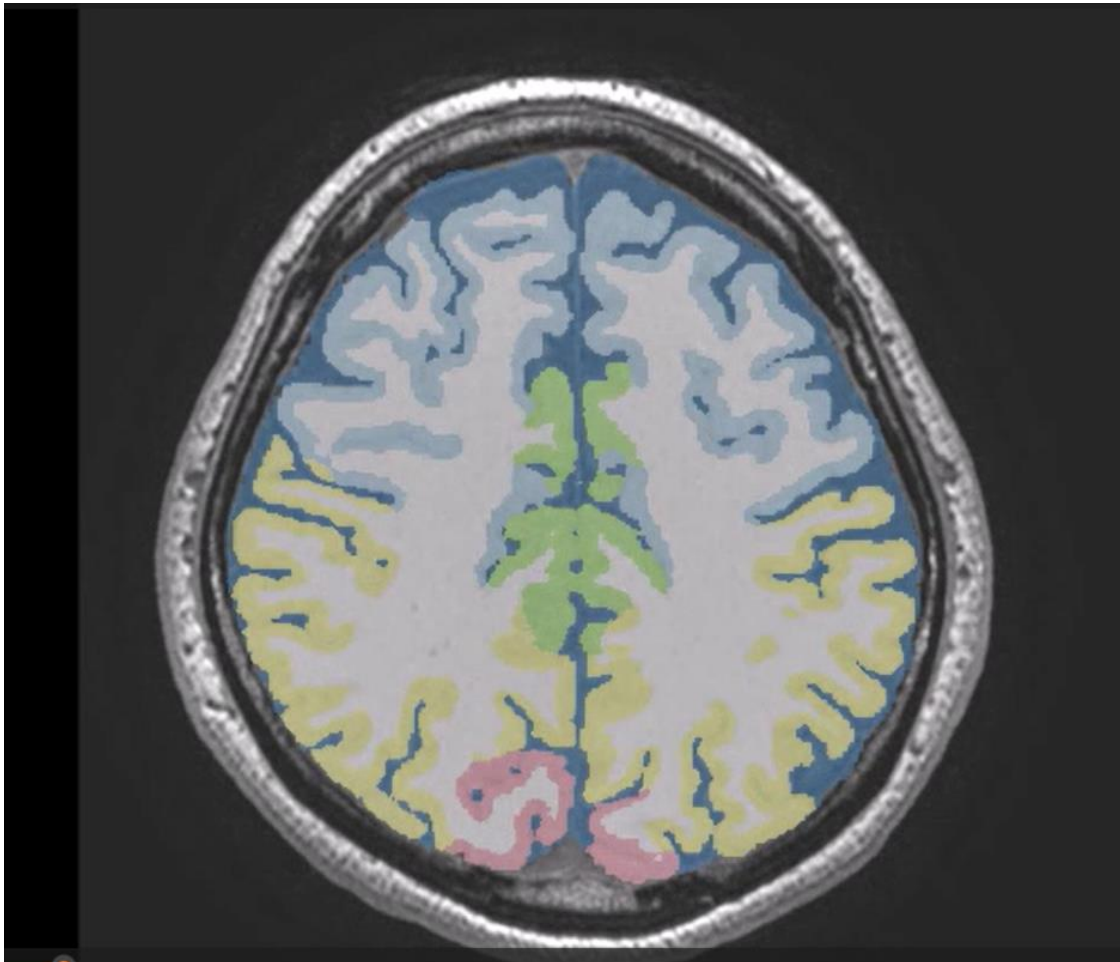


SUPPLEMENTARY DATA

Aging and Sex Differences in Brain Volume and Cerebral Blood Flow

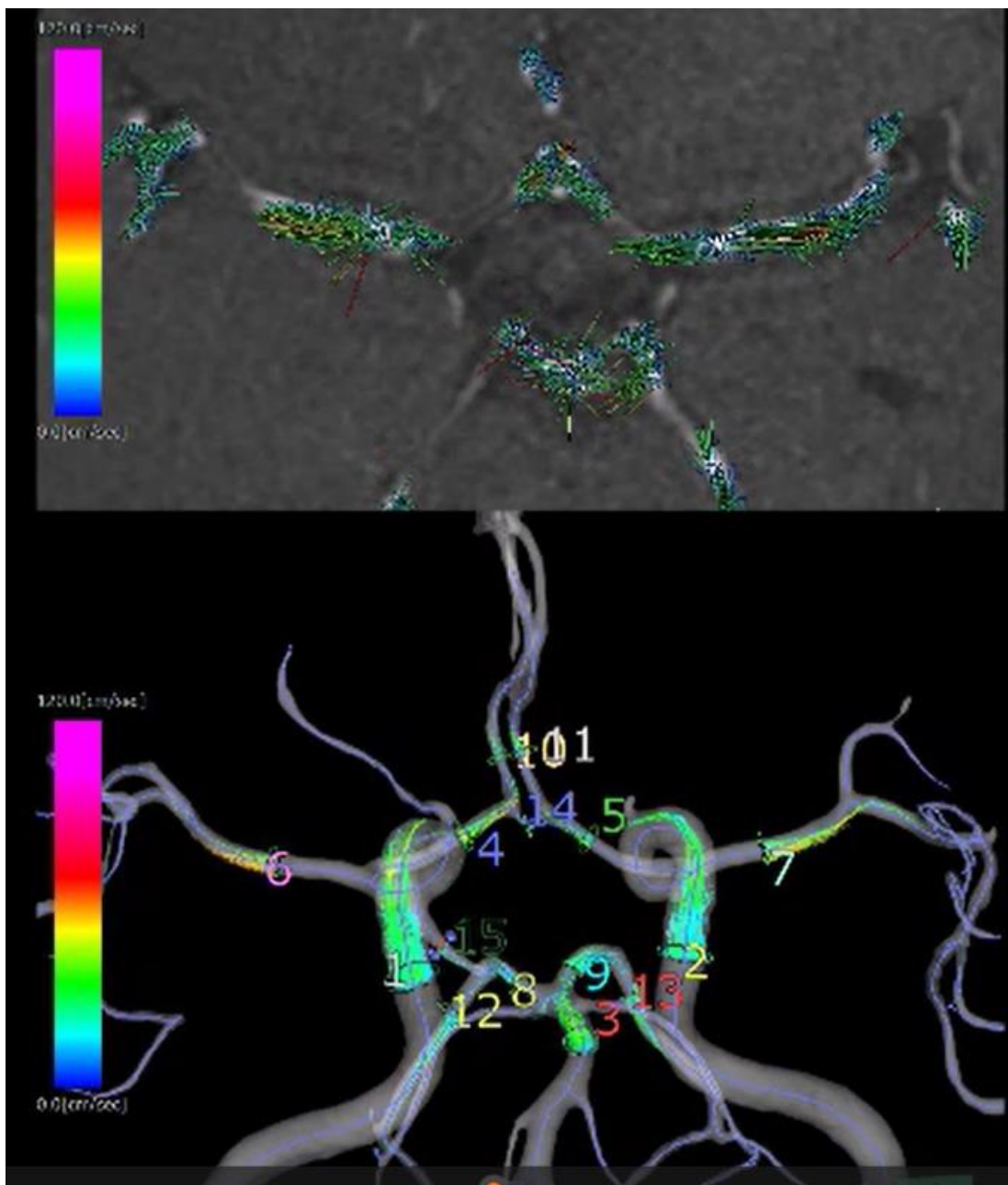
Hiroto Kawano, Shigeki Yamada, Yoshiyuki Watanabe⁴, Satoshi Ii, Tomohiro Otani, Hirotaka Ito, Ko Okada, Chifumi Iseki, Motoki Tanikawa, Shigeo Wada, Marie Oshima, Mitsuhiro Mase, Kazumichi Yoshida

SUPPLEMENTARY DATA



Supplementary Movie 1: The Videoclip shows the sequential images of axial, coronal and sagittal sections of a 48-year-old male healthy brain on the Brain Subregion Analysis application of the 3D volume analyzer SYNAPSE 3D workstation (FUJIFILM Corporation).

SUPPLEMENTARY DATA



Supplementary Movie 2: The upper videoclip shows the flow vectors and the lower shows the streamlines of the intracranial arteries around the circle of Willis of the same healthy participant as in the Supplement Video 1 (a 48-year-old male) on the 4D flow application of the 3D volume analyzer SYNAPSE 3D workstation (FUJIFILM Corporation).

SUPPLEMENTARY DATA