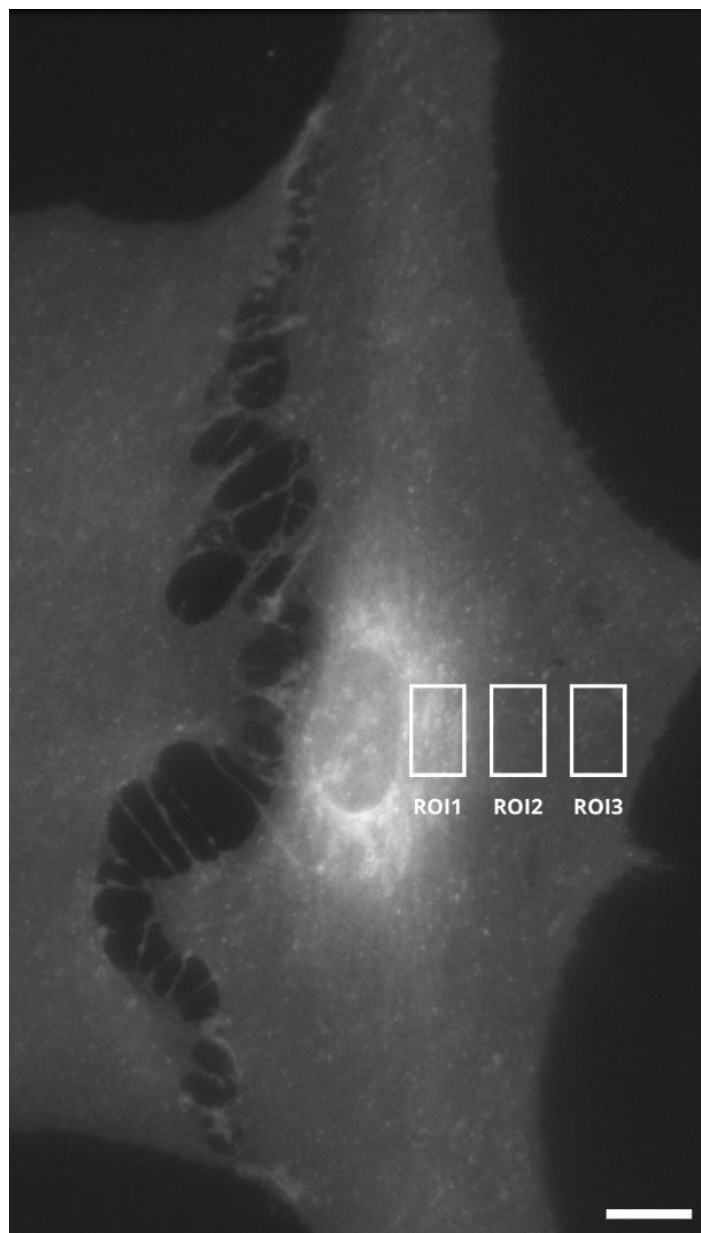


SUPPLEMENTARY DATA

Receptor-Specific Adenosine Signalling Governs Astrocyte Glycogen Homeostasis

Kaja Belko Parkel, Živa Tajda Gržina, Robert Zorec, Marko Kreft

SUPPLEMENTARY DATA



Supplementary Figure 1. Glycogen mapping and ROI selection in primary rat astrocytes. Representative image of periodic acid–Schiff (PAS) staining visualizing intracellular glycogen; boxes denote the regions of interest (ROIs) used for analysis. Scale bar: 10 μ m.